

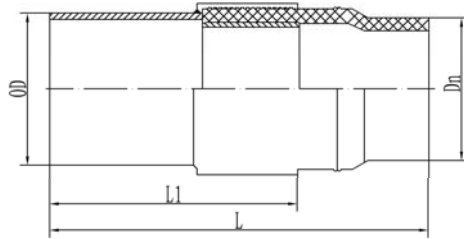


# *PE-METAL TRANSITIONAL FITTING*



STRAIGHT WELED PE-METAL TRANSITIONAL FITTING  
PE100/80 SDR11

ISO 10838-2:2000

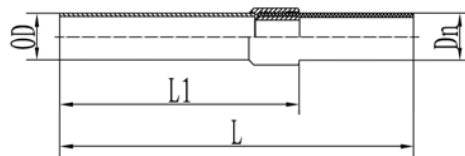


Dn(mm)	L	L1	OD <sup>*e</sup>
200	≥515	≥715	208 #8
200	≥515	≥715	219 #8
250	≥870	≥610	273 #8
315	≥900	≥640	273 #9
315	≥900	≥640	325 #9
400	≥930	≥665	325 #9
450	≥930	≥665	426 #9

# STRAIGHT PE-METAL TRANSITIONAL FITTING

PE100/80 SDR11

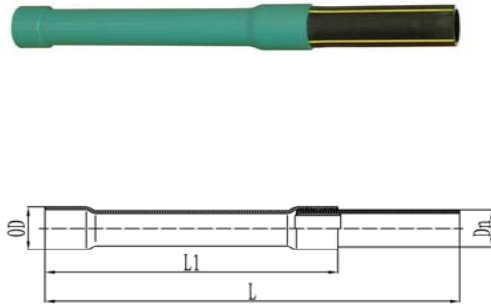
ISO 10838-1:2000 ISO 10838-2:2000



Dn (mm)	L	L1	OD <sup>e</sup>
32	≥495	≥290	34 *3.5
40	≥535	≥340	42 *4.5
50	≥585	≥390	50 *5
63	≥400	≥600	60 *5
90	≥460	≥680	89 *6
110	≥480	≥680	108 *6
160	≥520	≥720	159 *8

STRAIGHT PE-METAL THREADED TRANSITIONAL FITTING  
PE100/80 SDR11

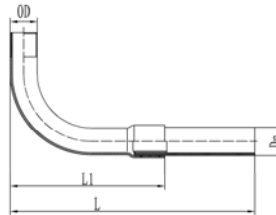
ISO 10838-1:2000



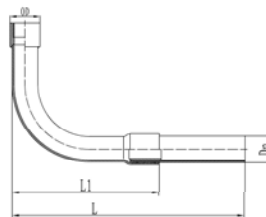
Dn(mm)	L	L1	OD* <sup>e</sup>
32	≥495	≥290	40*5
40	≥589	≥378	50*8.5
50	≥585	≥390	60*8
63	≥633	≥436	70*6.6

## BEND PE-METAL TRANSITIONAL FITTING

ISO 10838-1:2000



Dn(mm)	L	L1	OD*e
32	≥495	≥340	34 *3.5
40	≥535	≥390	42 *4.5
50	≥585	≥440	50 *5



Dn(mm)	L	L1	OD*e
32	≥495	≥340	40*5
40	≥535	≥390	50*8.5
50	≥585	≥440	60*8