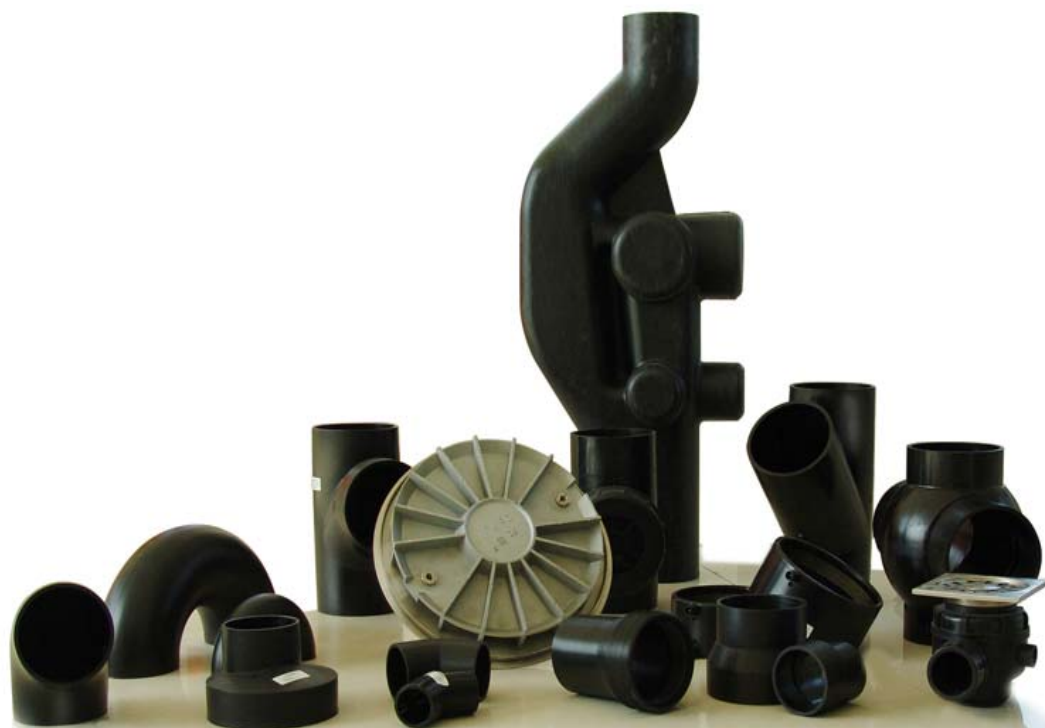


吉林松江虹吸同层排水管件



www.jlsjpipe.com

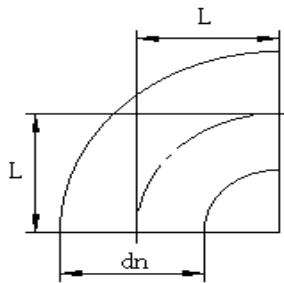
90° 弯头

CJ/T 250-2007
ISO 8770:2003
EN 1519-1:1999

PE100 SDR26



Bend 90°



Dn(mm)	L(mm)	Pcs/Box
50	45	500
75	70	150
90	90	75
110	95	40
125	115	30
160	219	15
200	283	

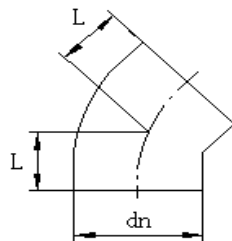
45°弯头

CJ/T 250-2007
ISO 8770:2003
EN 1519-1:1999

PE100 SDR26



Bend 45°



Dn(mm)	L(mm)	Pcs/Box
50	45	400
75	70	170
90	90	100
110	95	60
125	115	50
160	219	25

加长 90° 弯头

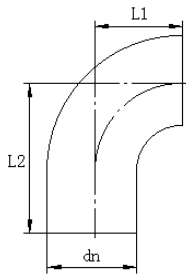
PE100 SDR26

CJ/T 250-2007
ISO 8770:2003
EN 1519-1:1999



Bends 90° With Long Tail

Dn(mm)	L1(mm)	L2(mm)	Pcs/Box
50	40	180	
75	70	210	
90	90	240	
110	100	270	



脸盆落水 90° 弯头

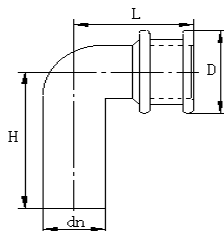
PE100 SDR26

CJ/T 250-2007
ISO 8770:2003
EN 1519-1:1999



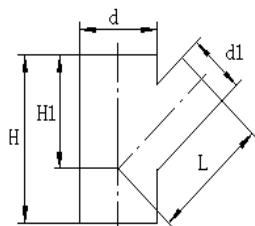
Bent Waste Connector 90°

Dn(mm)	D(mm)	L(mm)	H(mm)	Pcs/Box
50	90	65	58	





Y-Branch



Dn(mm)	H(mm)	H1(mm)	L(mm)	Pcs/Box
50×50×50	145	98	110	170
75×75×75	190	130	140	64
90×50×90	240	160	180	36
90×56×90	240	160	180	36
90×63×90	240	160	180	36
90×75×90	240	160	180	36
90×90×90	240	160	180	27
110×50×110	270	194	194	27
110×63×110	270	194	190	25
110×75×110	270	188	190	25
110×90×110	270	182	185	25
110×110×110	270	178	180	20
125×63×125	280	212	215	18
125×75×125	280	205	208	18
125×90×125	280	205	206	18
160×56×160	310	243	250	10
160×63×160	310	270	272	10
160×75×160	310	256	260	10
160×90×160	375	261	260	10
160×110×160	375	246	250	9
200×75×200	275	252	255	9
200×90×200	275	276	280	9
200×110×200	275	270	275	8
200×125×200	275	275	280	8

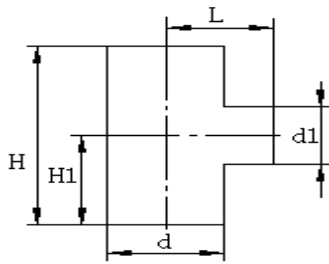
88.5°(91.5°)三通

CJ/T 250-2007
ISO 8770:2003
EN 1519-1:1999

PE100 SDR26



Branch 88.5°(91.5°)



Dn(mm)	H(mm)	H1(mm)	L(mm)	Pcs/Box
75×50×75	95	85	50	95
90×50×75	105	97	50	48
90×75×90	105	97	75	48
110×50×110	125	106	50	30
110×75×110	125	106	75	30
110×90×110	125	106	90	30

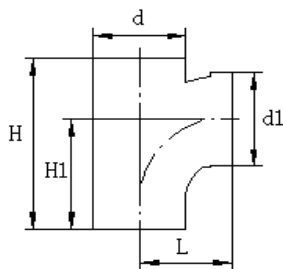
91.5°(88.5°)顺水三通

CJ/T 250-2007
ISO 8770:2003
EN 1519-1:1999

PE100 SDR26



Branch 88.5°(91.5°)

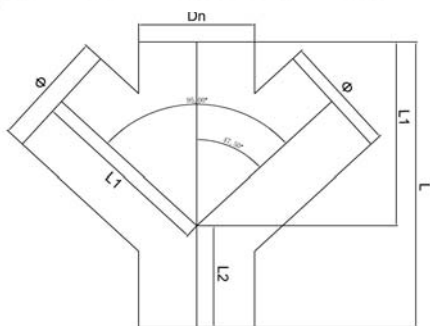


Dn(mm)	H(mm)	H1(mm)	L(mm)	Pcs/Box
50×50×50	148	91	73	210
75×75×75	194	114	82	75
110×50×110	221	135	94	30
110×75×110	226	138	120	25
110×110×110	226	138	120	25

双 Y 三通

PE100 SDR26

CJ/T 250-2007
ISO 8770:2003
EN 1519-1:1999



Dn(mm)	Φ(mm)	L1(mm)	L2(mm)	Pcs/Box
110x100x110	110	174	97	
110x50x110	50	174	97	
160x110x160				

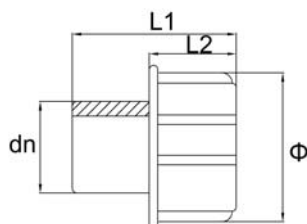
清扫口

PE100 SDR26

CJ/T 250-2007
ISO 8770:2003
EN 1519-1:1999



Access Plug



Dn(mm)	Φ(mm)	L1(mm)	L2(m m)	Pcs/Box
50	83	59.6	33.1	315
63	98.3	64	41.7	192
75	120.2	88.1	45	100
90	129.6	50.3	33.5	140
110	146.5	54.1	33	130

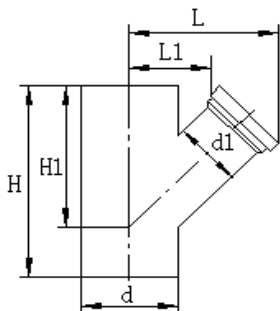
45°(135°) Y型检查孔

CJ/T 250-2007
ISO 8770:2003
EN 1519-1:1999

PE100 SDR26



Access Fitting 45°



Dn(mm)	H(mm)	H1(mm)	L(mm)	Pcs/Box
50×50×50	145	98	140	
75×75×75	190	130	190	
90×90×90	240	160	210	
110×110×110	270	178	214	16
125×90×125	205	135	90	
160×110×160	246	165	110	8
200×110×160	270	180	110	

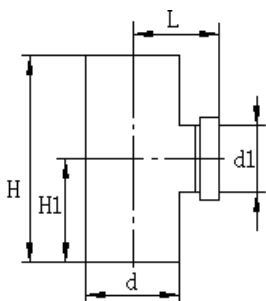
90°检查孔

CJ/T 250-2007
ISO 8770:2003
EN 1519-1:1999

PE100 SDR26



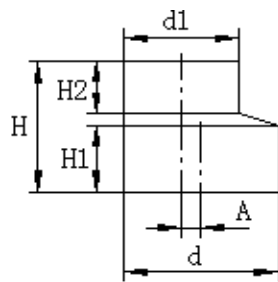
Access Fittings 90°



Dn(mm)	H(mm)	H1(mm)	L(mm)	Pcs/Box
75×50×75	175	95	125	
90×50×90	105	97	125	
90×75×90	200	105	130	
110×90×110	225	125	145	



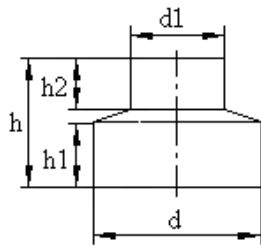
Short Eccentric Reducers



Dn(mm)	H(mm)	H1(mm)	H2(mm)	Pcs/Box
50×40	80	34	46	880
56×50	80	35	41	
63×50	82	35	48	590
63×56	74	34	40	540
75×50	74	34	40	290
75×56	77	34	42	450
75×63	80	39	34	420
90×56	80	36	38	290
90×63	80	34	42	290
90×75	73	34	38	290
110×50	79	34	45	200
110×56	79	33	33	200
110×63	80	33	46	200
110×75	72	34	37	200
110×90	73	34	32	200
125×75	83	38	36	160
125×90	83	33	41	160
125×110	78	33	37	160
160×110	80	33	46	90
160×125	78	33	44	90
200×160	146	38	42	30



Concentric Reducers



Dn(mm)	L1(mm)	L2(mm)	H2(mm)	Pcs/Box
200×160	22.1	90	80	
250×200	23.8	100	100	
315×200	30.2	150	100	
315×250	31.8	150	110	
355×315	20.8	70	100	
400×250	23.7	50	100	
400×315	25.9	60	150	

伸缩节

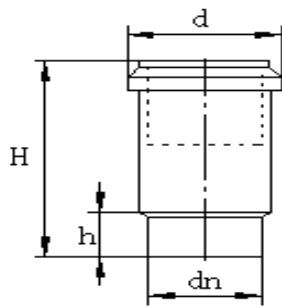
PE100 SDR26

CJ/T 250-2007
ISO 8770:2003
EN 1519-1:1999



Expansion Sockets

Dn(mm)	d(mm)	H1(mm)	h(mm)	Pcs/Box
75	92	92	23	160
90	120	206	48	40
110	135	204	36	30



止动短管

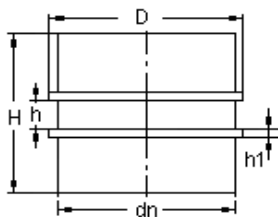
PE100 SDR26

CJ/T 250-2007
ISO 8770:2003
EN 1519-1:1999



Anchor Pipe

Dn(mm)	H(mm)	h(mm)	h1(mm)	Pcs/Box
200 (210)	141	47	15	18
250 (260)	201	47	20	8

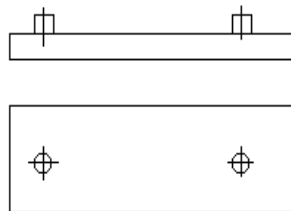


锚固用电熔环
PE100 SDR26

CJ/T 250-2007
ISO 8770:2003
EN 1519-1:1999



Electroweld Surround Coupling



Dn(mm)	Pcs/Box
63	
75	
90	
110	500
125	400
160	300

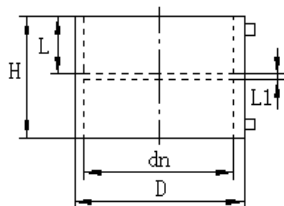
电熔管箍

PE100 SDR26

CJ/T 250-2007
ISO 8770:2003
EN 1519-1:1999



Electroweld Sleeve Couplings



Dn(mm)	H(mm)	L(mm)	L1(mm)	Pcs/Box
50	53	26	1.5	540
56	53	26	1.5	477
63	53	26	1.5	279
75	53	26	1.5	290
90	53	26	1.5	216
110	58	27	2	120
125	63	31	2	90
160	63	31	2	50
200	121	60	3	16
250	131	65	4	9

U型存水弯

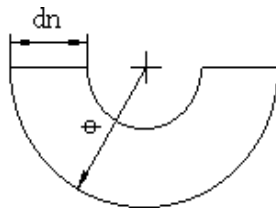
PE100 SDR26

CJ/T 250-2007
ISO 8770:2003
EN 1519-1:1999



U-Traps

Dn(mm)	Φ(mm)	Pcs/Box
50	75	260
75	110	100
90	140	75
110	160	16



U型排污存水弯

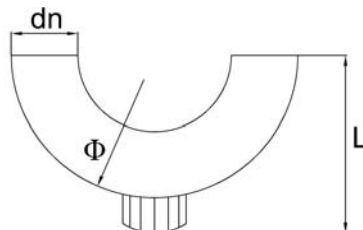
PE100 SDR26

CJ/T 250-2007
ISO 8770:2003
EN 1519-1:1999



U-Sewage trap

Dn(mm)	Φ(mm)	L(mm)	Pcs/Box
50	75	100.8	
75	110	137.8	
90	140	158.8	
110	160	185.8	



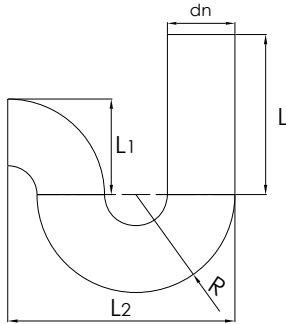
P型存水弯

PE100 SDR26

CJ/T 250-2007
ISO 8770:2003
EN 1519-1:1999



P-Trap



Dn(mm)	L(mm)	L1(mm)	L2(mm)	R	Pcs/Box
50	180	70	170	75	
75	180	108	253	110	
90	180	135	325	140	
110	180	150	360	160	

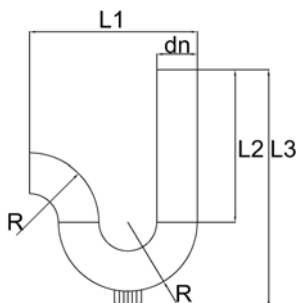
P型排污存水弯

PE100 SDR26

CJ/T 250-2007
ISO 8770:2003
EN 1519-1:1999



P-sewage trap



Dn(mm)	L1(mm)	L2(mm)	L3(mm)	R	Pcs/Box
50	170	180	280.8	75	
75	253	180	315.8	110	
90	325	180	345.8	140	
110	360	180	365.8	160	

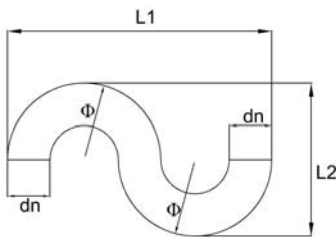
S型存水弯

PE100 SDR26

CJ/T 250-2007
ISO 8770:2003
EN 1519-1:1999



S-Trap



Dn(mm)	L1(mm)	L2(mm)	Pcs/Box
50	250	150	
75	373	224	
90	442	266	
110	530	320	

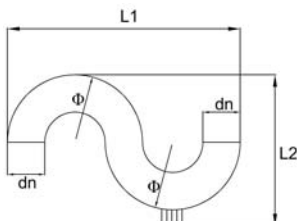
S型排污存水弯

PE100 SDR26

CJ/T 250-2007
ISO 8770:2003
EN 1519-1:1999



S-sewage trap

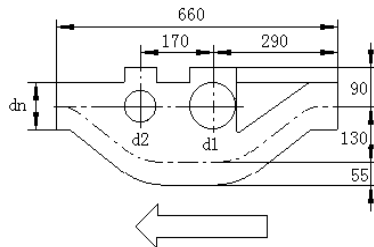


Dn(mm)	L1(mm)	L2(mm)	Pcs/Box
50	250	150	
75	373	224	
90	442	266	
110	530	320	



Sovent Branch

Dn(mm)	d1	d2	Pcs/Box
110	110	75	5



球状支管连件(90° 135° 180°)

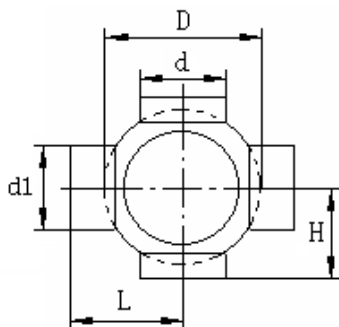
PE100 SDR26

CJ/T 250-2007
ISO 8770:2003
EN 1519-1:1999



Double Branchball Fittings

Dn(mm)	D(mm)	H(mm)	L(mm)	Pcs/Box
110×50×110	172	35	52	16
110×63×110	170	35	52	16
110×75×110	167	35	52	16
110×90×110	164	35	52	16
110×110×110	160	35	52	16



雨水斗法兰

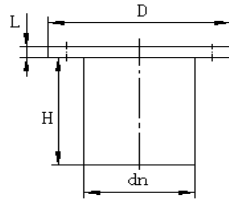
PE100 SDR26

CJ/T 250-2007
ISO 8770:2003
EN 1519-1:1999



Flang Adaptor

Dn(mm)	D(mm)	L(mm)	H(mm)	Pcs/Box
63	105	8	80	160
110	113	8.5	150	60



地漏

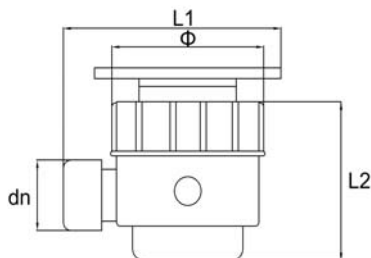
PE100 SDR26

CJ/T 250-2007
ISO 8770:2003
EN 1519-1:1999



Floor Drain

Dn(mm)	L1(mm)	L2(mm)	Pcs/Box
50	130	87.3	
50	130	87.3	



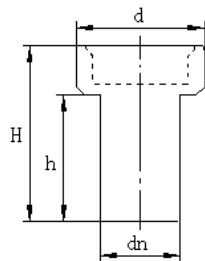
雨水斗丝接头

PE100 SDR26

CJ/T 250-2007
ISO 8770:2003
EN 1519-1:1999



Adaptors With



Dn(mm)	d(mm)	H(mm)	h(mm)	Pcs/Box
56	88	116	82	160
63	80	112	57	
75	90	120	82	140
90	105	148	87	72

雨水斗

PE100 SDR26

CJ/T 250-2007
ISO 8770:2003
EN 1519-1:1999



Siphonic Floor Drain

Dn(mm)	Pcs/Box
56	
90	
110	



AH-1 电熔焊接机

输入电源电压	220±15V AC	频率范围	50Hz
Power	1KVA	焊接直径	Φ50mm- Φ250mm
焊接插头类型	Φ2.5mm、Φ4.0mm		
Moisture	70%	工作环境温度范围	-5—+40°C
外型尺寸	264mm X 184mm X96mm	重量	1.6KG